

Whitebark Pine Survey

PRELIMINARY RESULTS FROM AN ONLINE SURVEY OF WHITEBARK PINE
HABITAT MANAGERS DURING THE FALL OF 2017

Julee Shamhart, Executive Assistant, Whitebark Pine Ecosystem Foundation

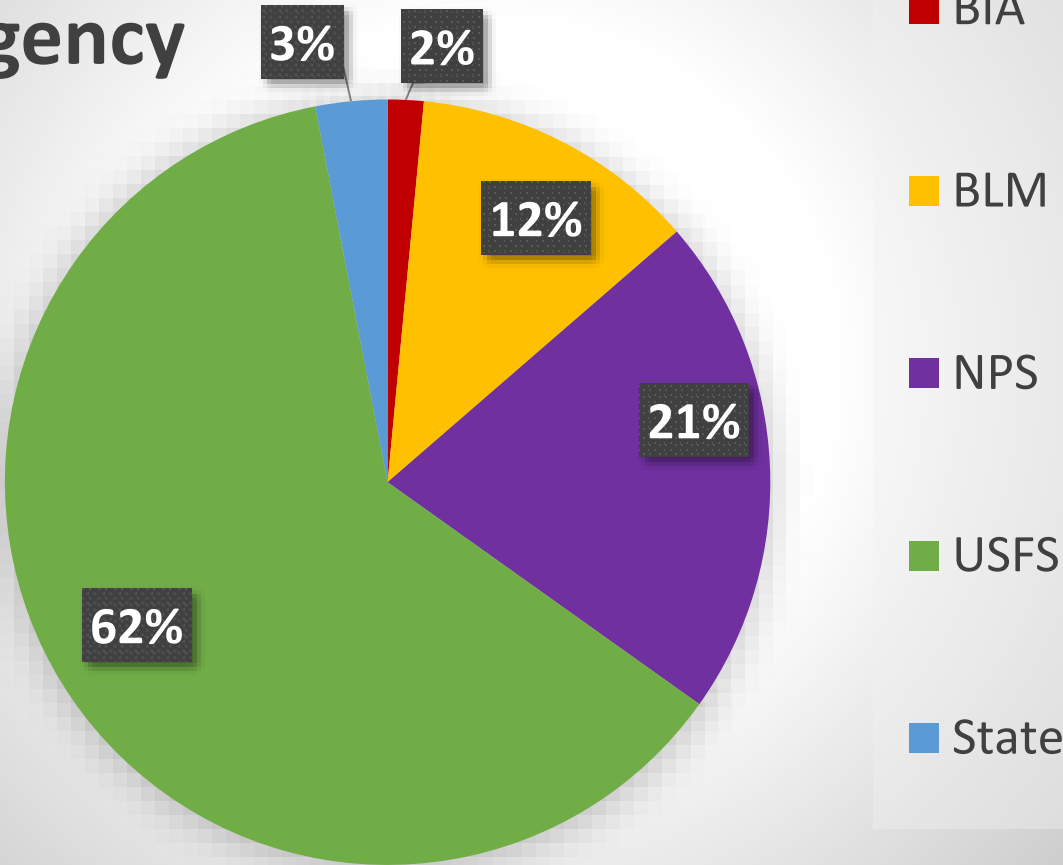


Objectives

- ▶ Identify what data is currently available
- ▶ Identify gaps in data geographically and by agency
- ▶ Develop understanding of resources needed to fill gaps in data
- ▶ Expand knowledge of resources needed to meet restoration goals

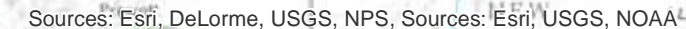
Survey Response

Responses by
Agency



BIA	1	0.0152
BLM	8	0.1212
NPS	14	0.2121
USFS	41	0.6212
State	2	0.0303

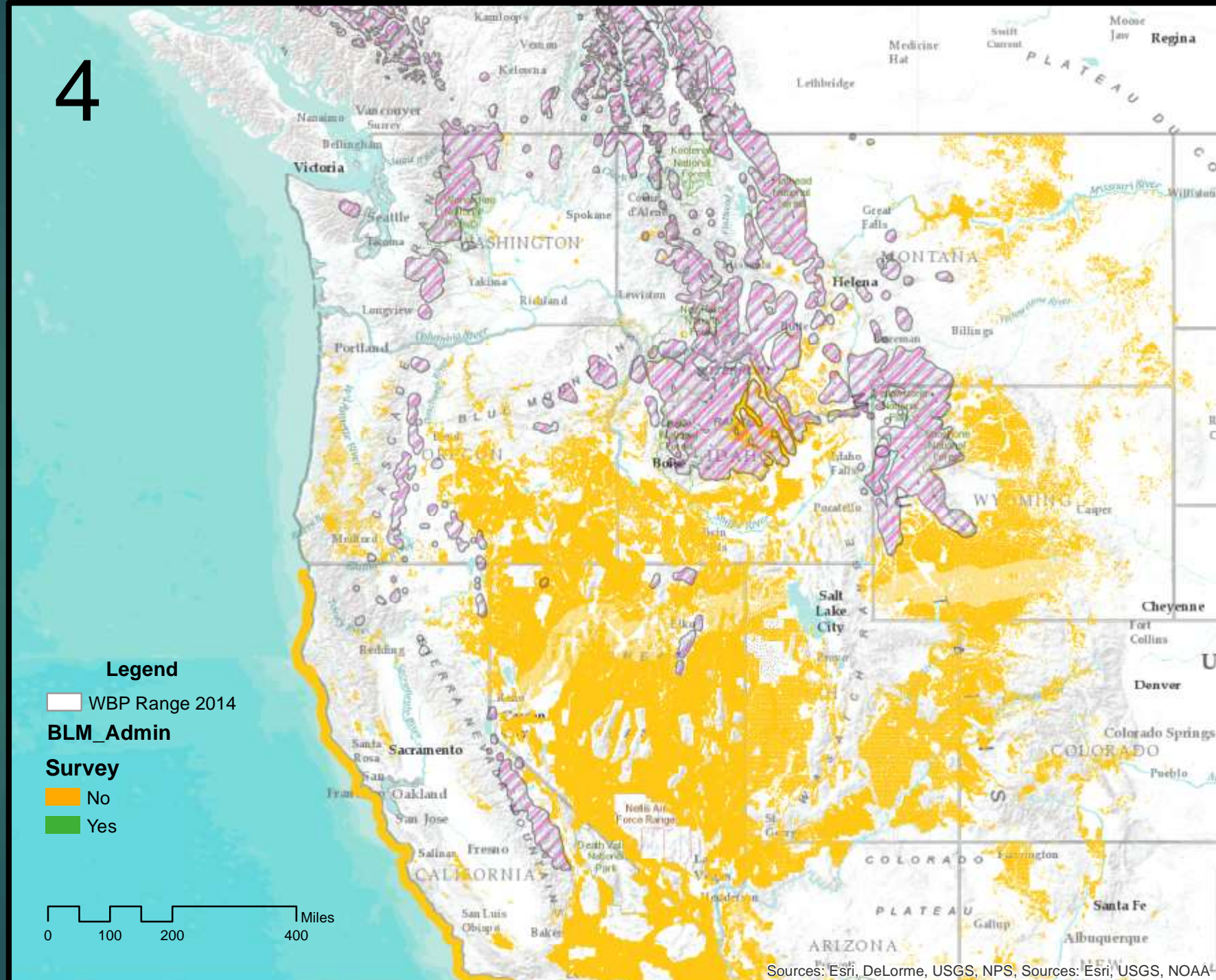
4



Geographic Coverage

- Bureau of Land Management

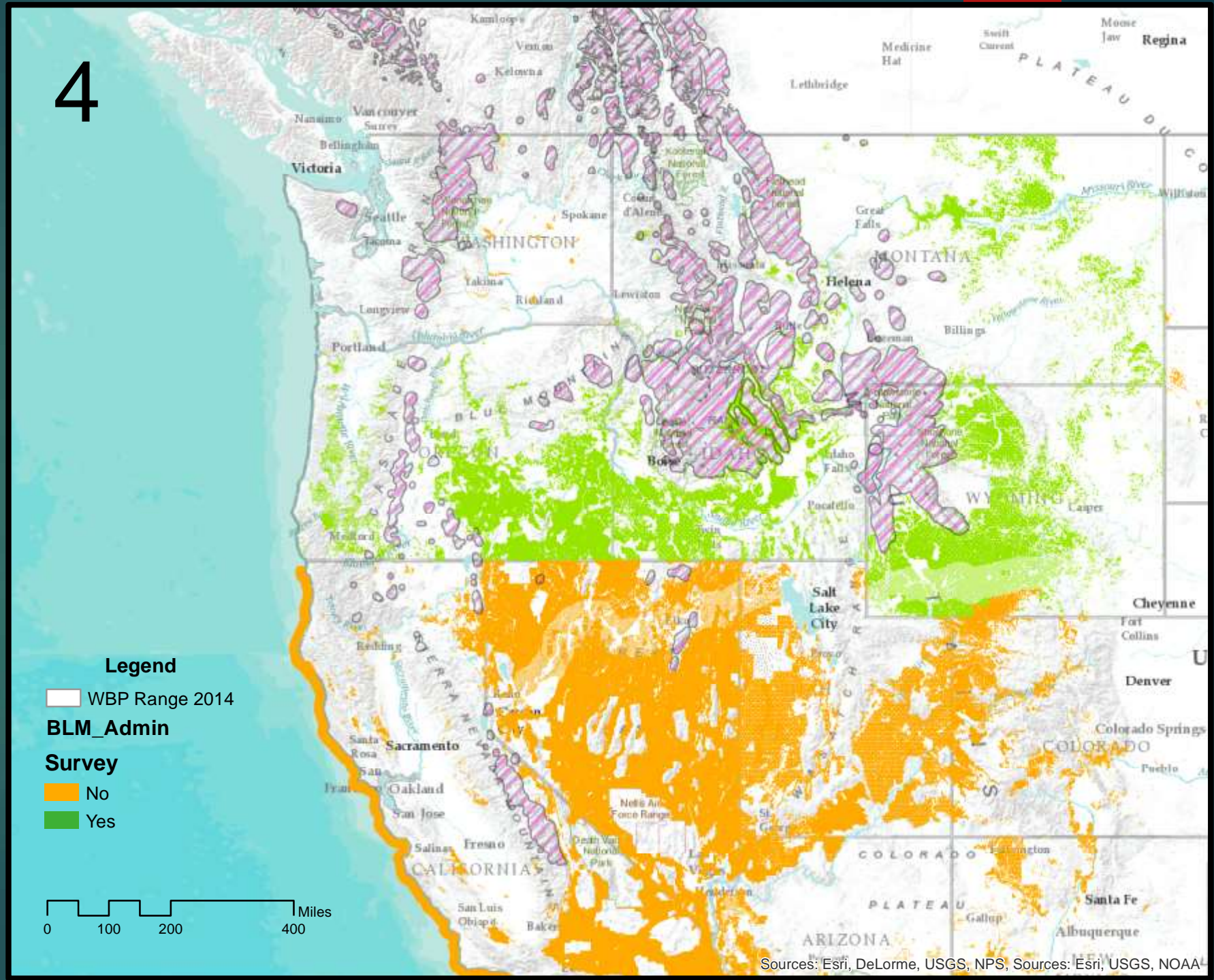
4



Geographic Coverage

- Bureau of Land Management

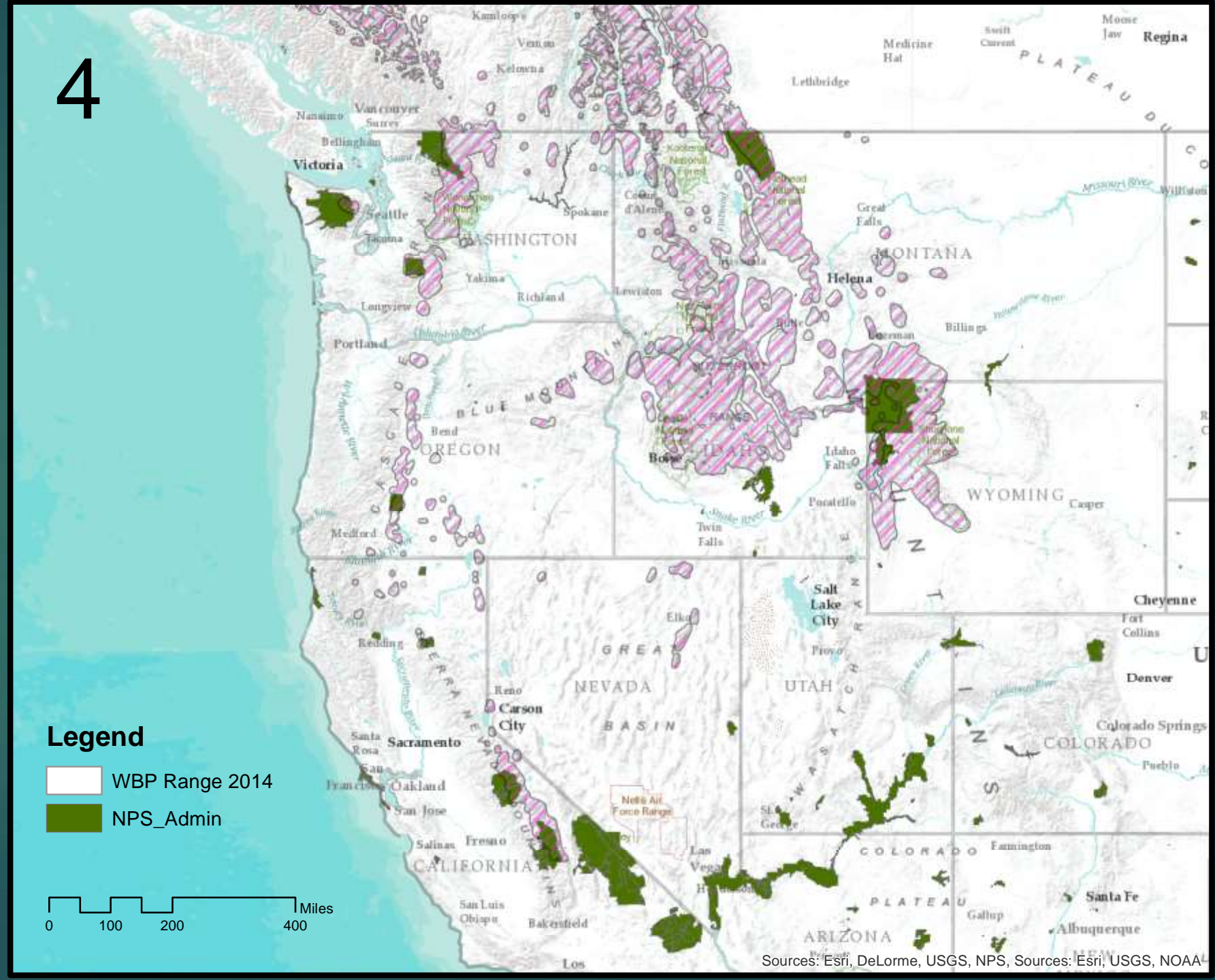
4



Geographic Coverage

- Bureau of Land Management
- National Park Service

4



4

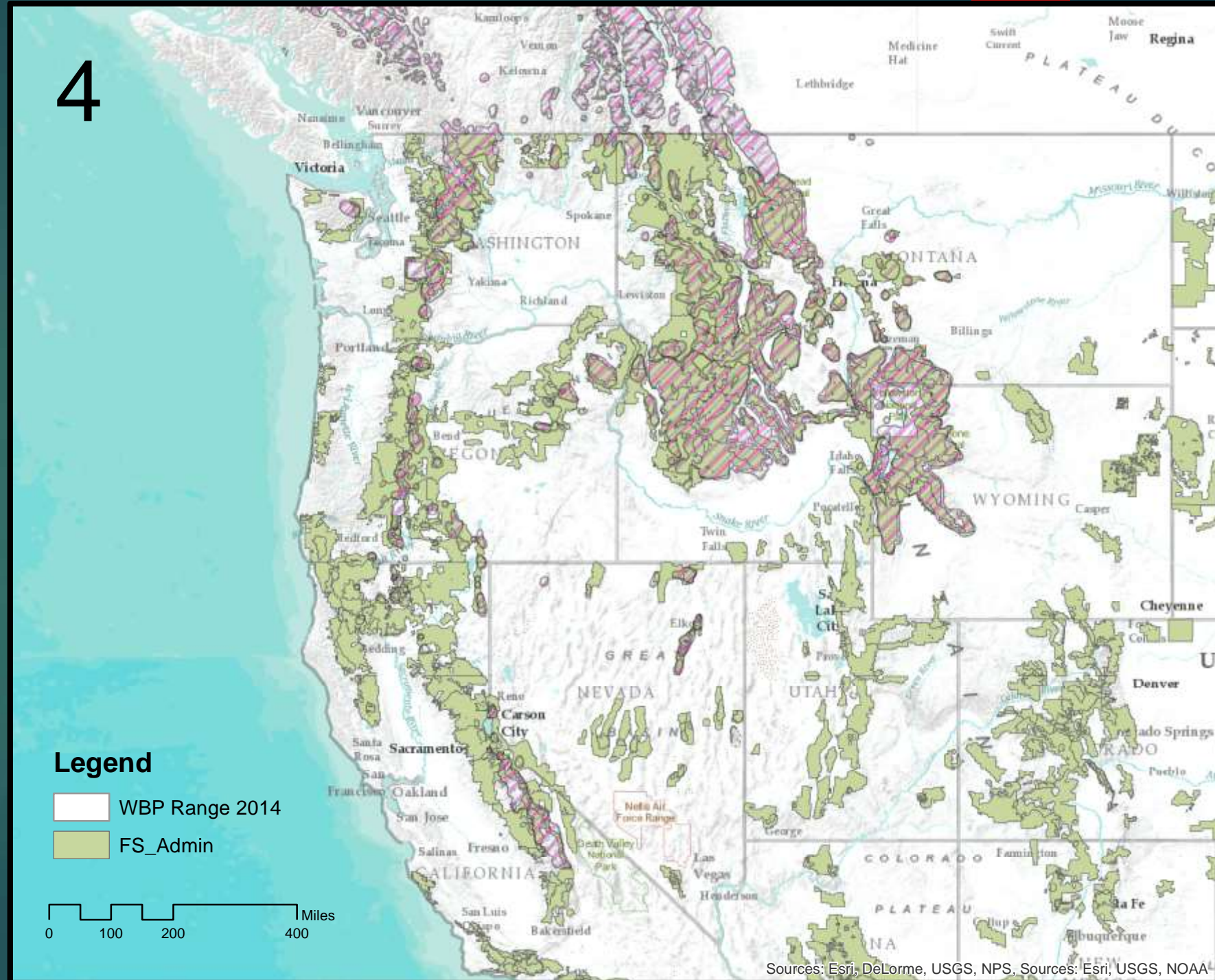
-
- 4
- Legend**
- WBP Range 2014
- Survey**
- No
- Yes
- Miles
- 0 100 200 400
- Sources: Esri, DeLorme, USGS, NPS, Sources: Esri, USGS, NOAA

Sources: Esri, DeLorme, USGS, NPS, Sources: Esri, USGS, NOAA

Geographic Coverage

- Bureau of Land Management
- National Park Service
- US Forest Service

4



4

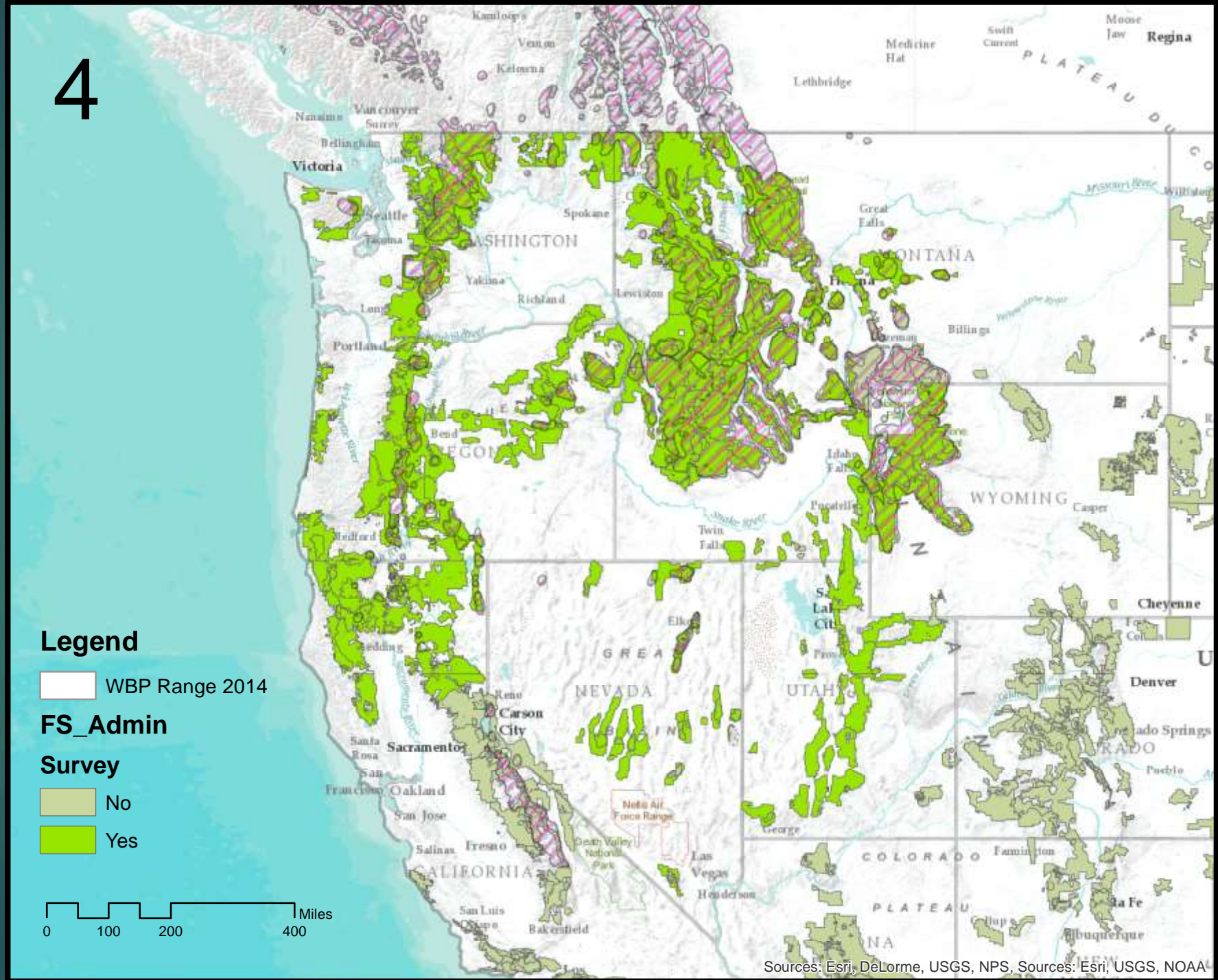
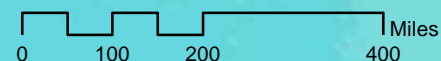
- ## Legend

FS_Admin

Survey

No

☒ Yes



Sources: Esri, DeLorme, USGS, NPS, Sources: Esri, USGS, NOAA



Limitations

- ▶ Voluntary response survey
Likely skewed toward people who are interested in subject
- ▶ Low representation from some agencies
- ▶ Data coverage variable within responses- may be some overlap in areas
- ▶ Quantitative data misses important details in some questions

Management Guidelines

- ▶ Does your administrative unit have a restoration or management guide or set of guidelines for whitebark pine?
- ▶ 67% of respondents have guidelines or they are being developed

31

Yes



22

No



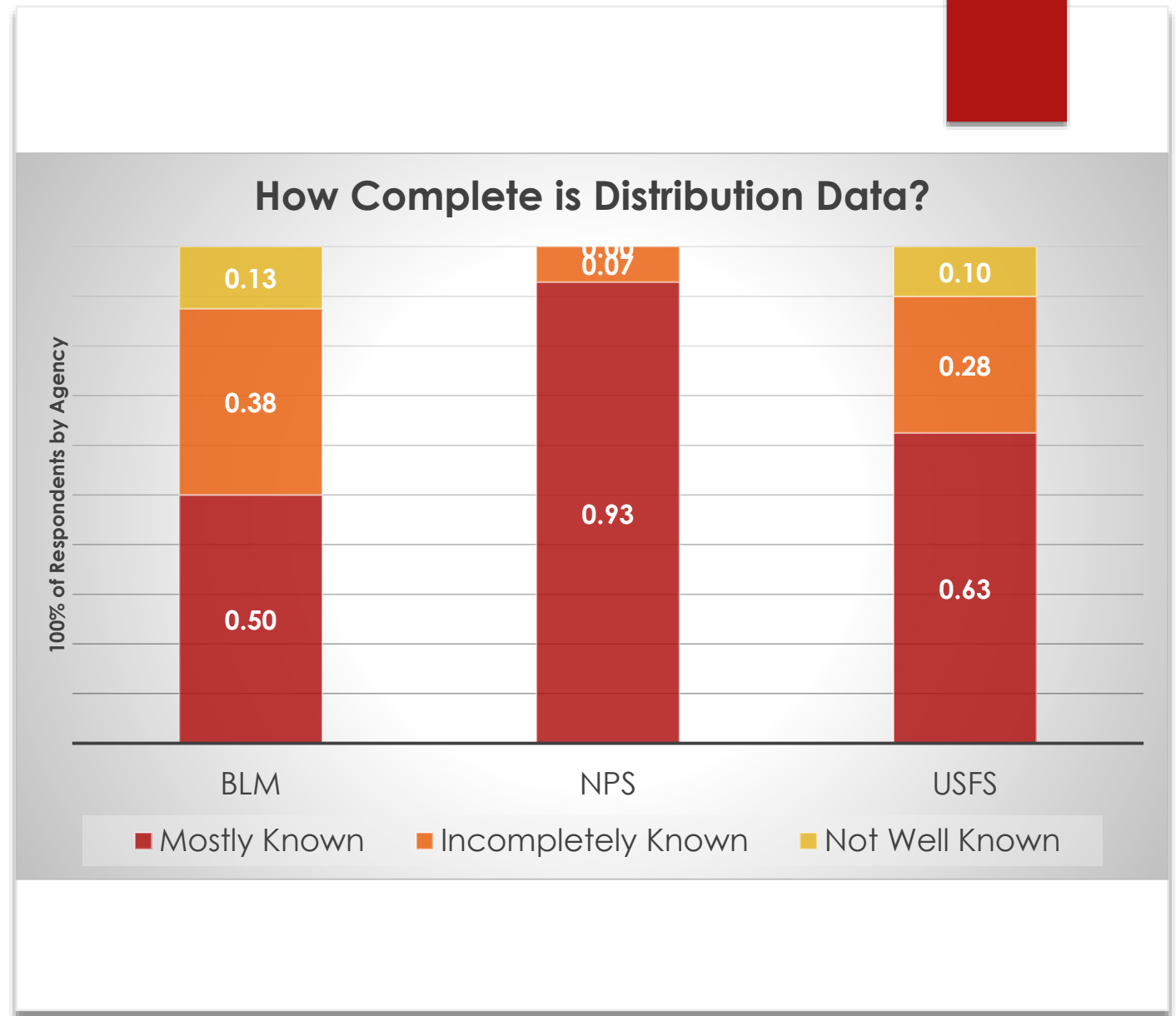
13

Guidelines/Guide Being Developed



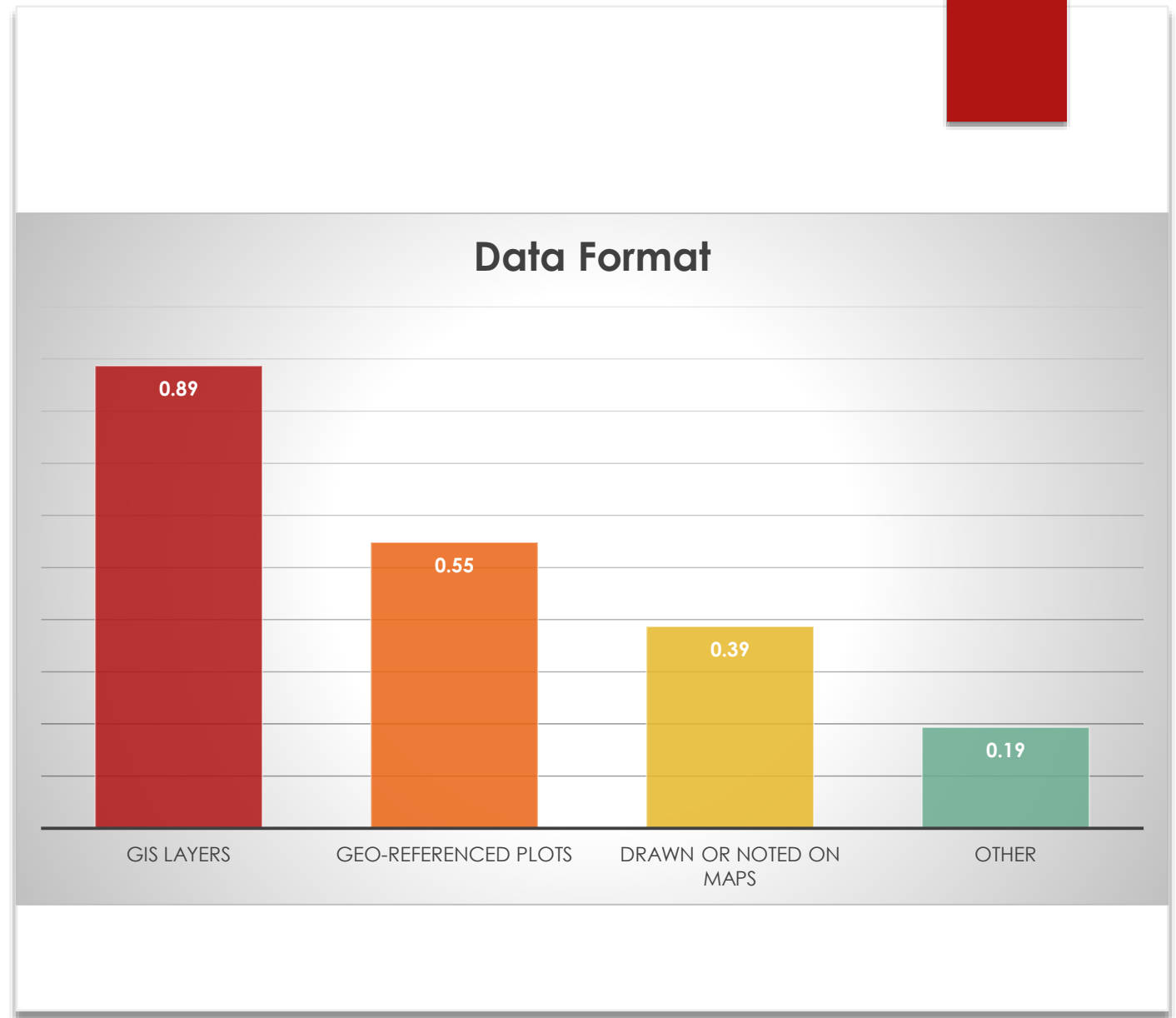
Habitat Data

- ▶ 95% of Respondents Have Data Showing Where Whitebark Pine is Present
- ▶ 67% of that data is 'Mostly Known'
- ▶ Another 25% is "Incompletely known"
- ▶ Only 8% "Not well known"



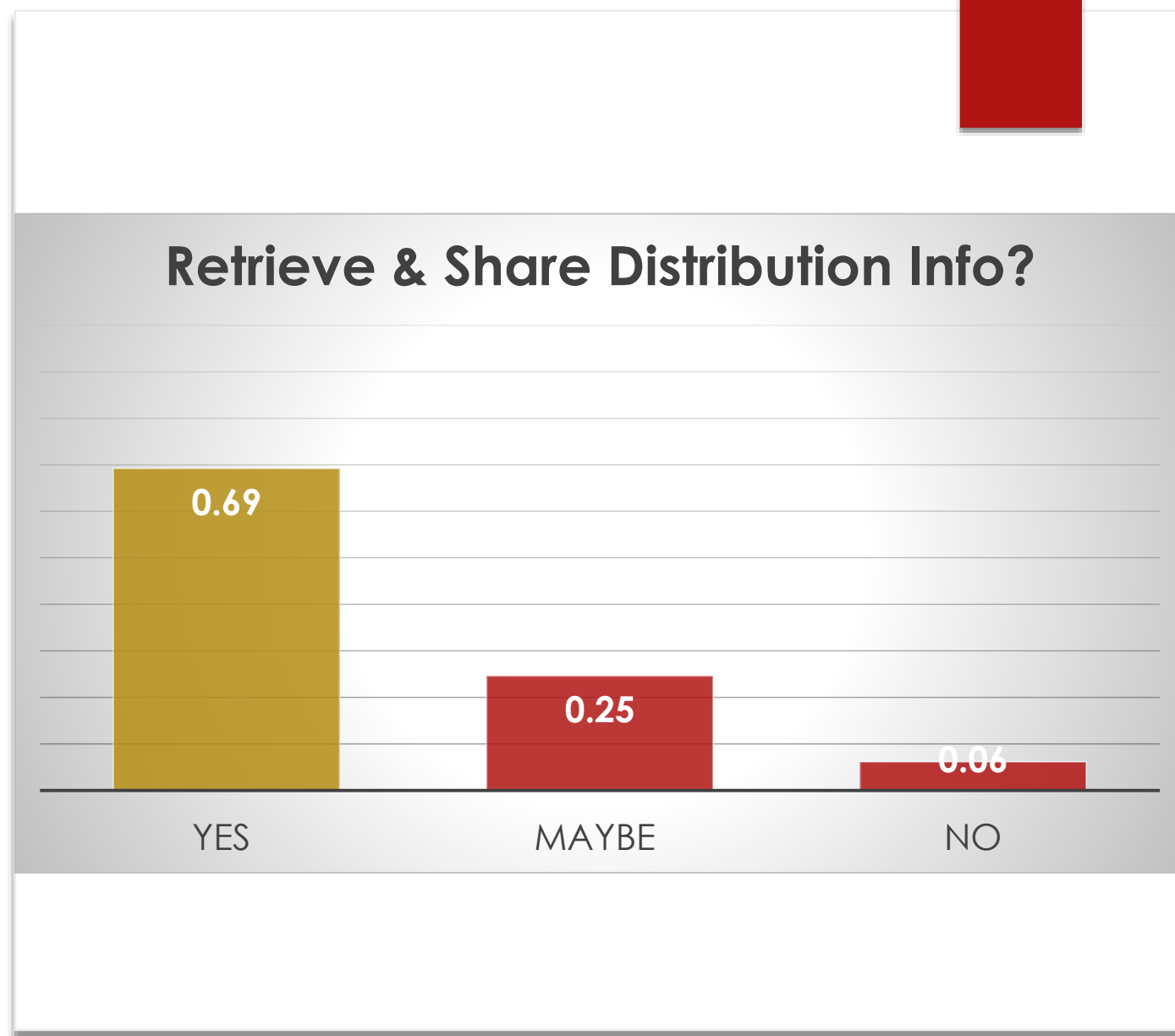
Habitat Data

- ▶ 95% of Respondents Have Data Showing Where Whitebark Pine is Present



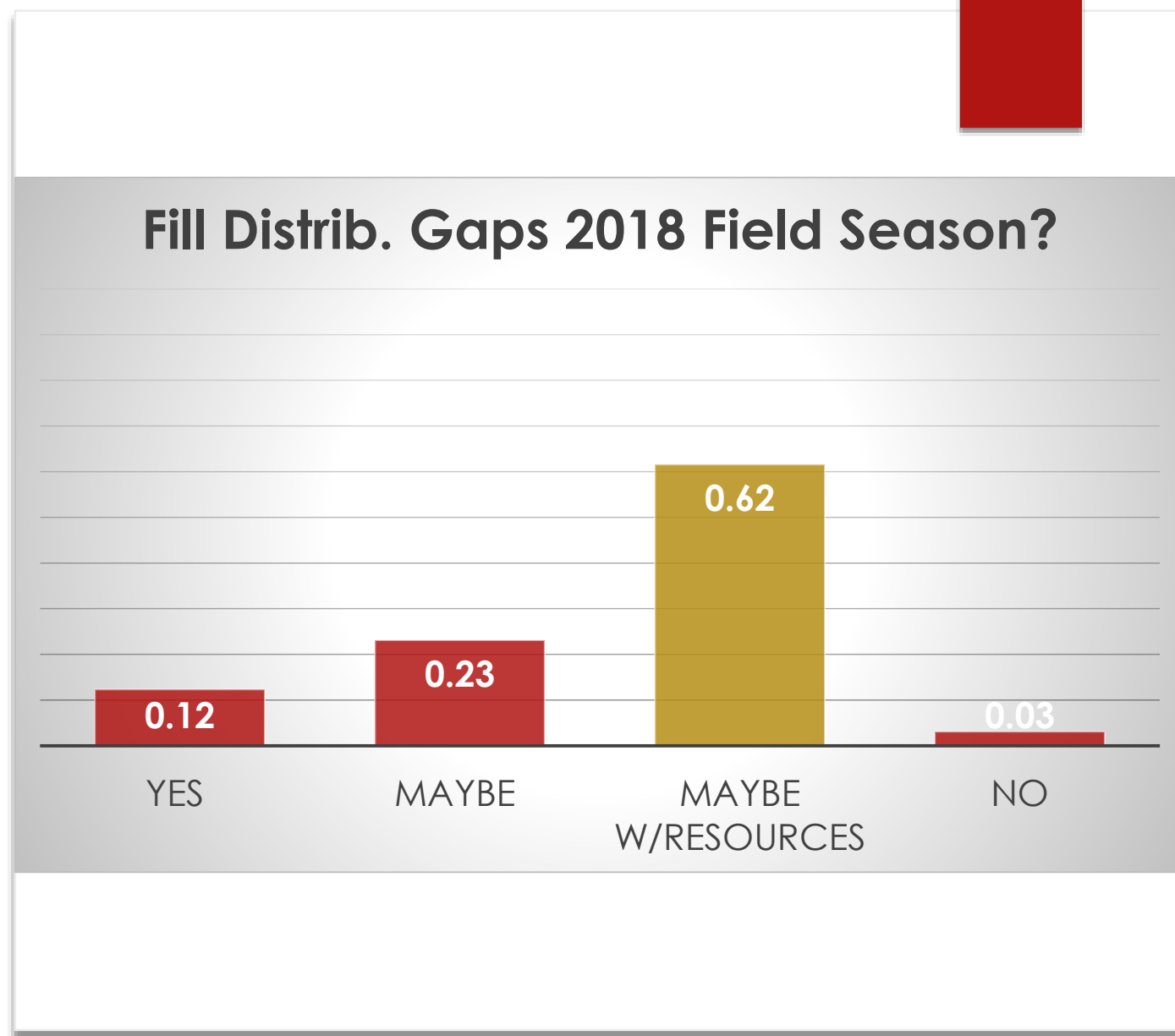
Habitat Data

- ▶ 95% of Respondents Have Data Showing Where Whitebark Pine is Present

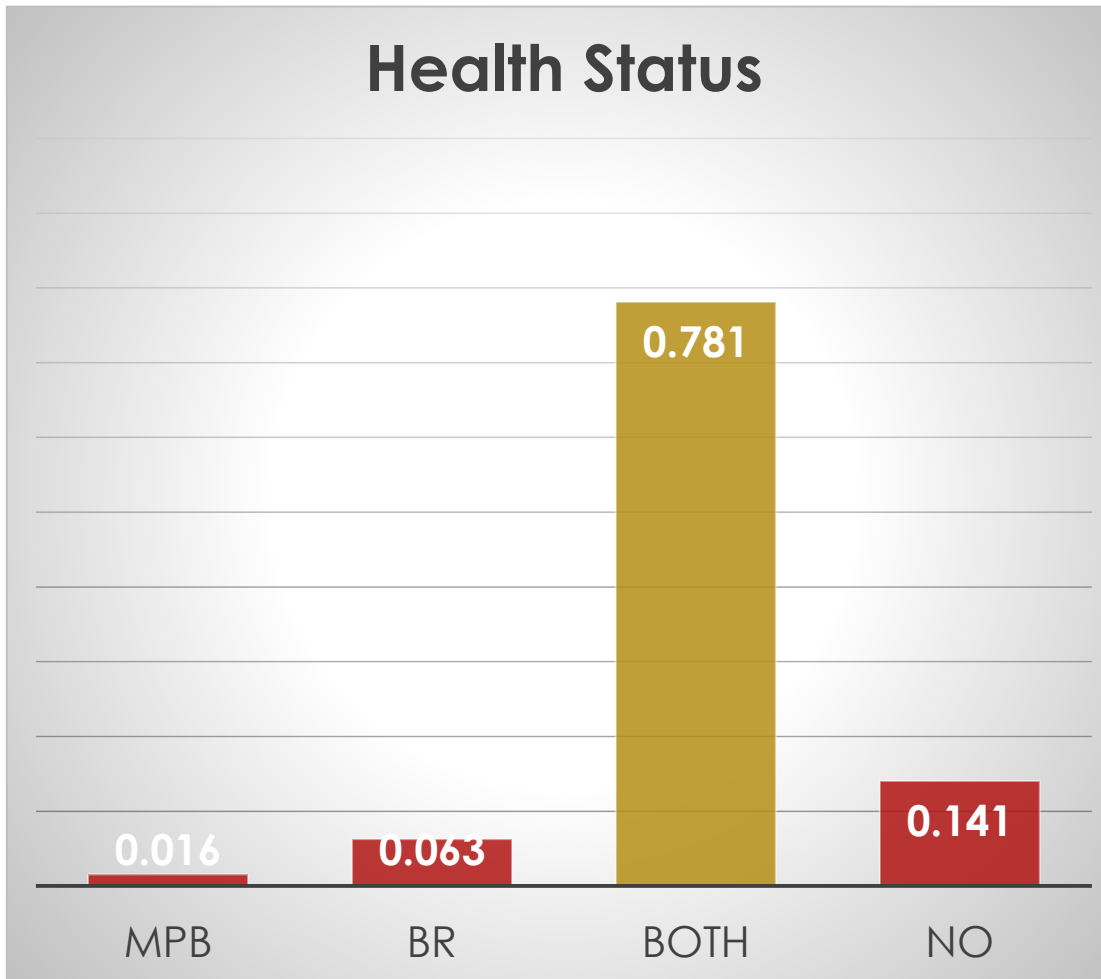


Habitat Data

- ▶ 95% of Respondents Have Data Showing Where Whitebark Pine is Present



Health Status



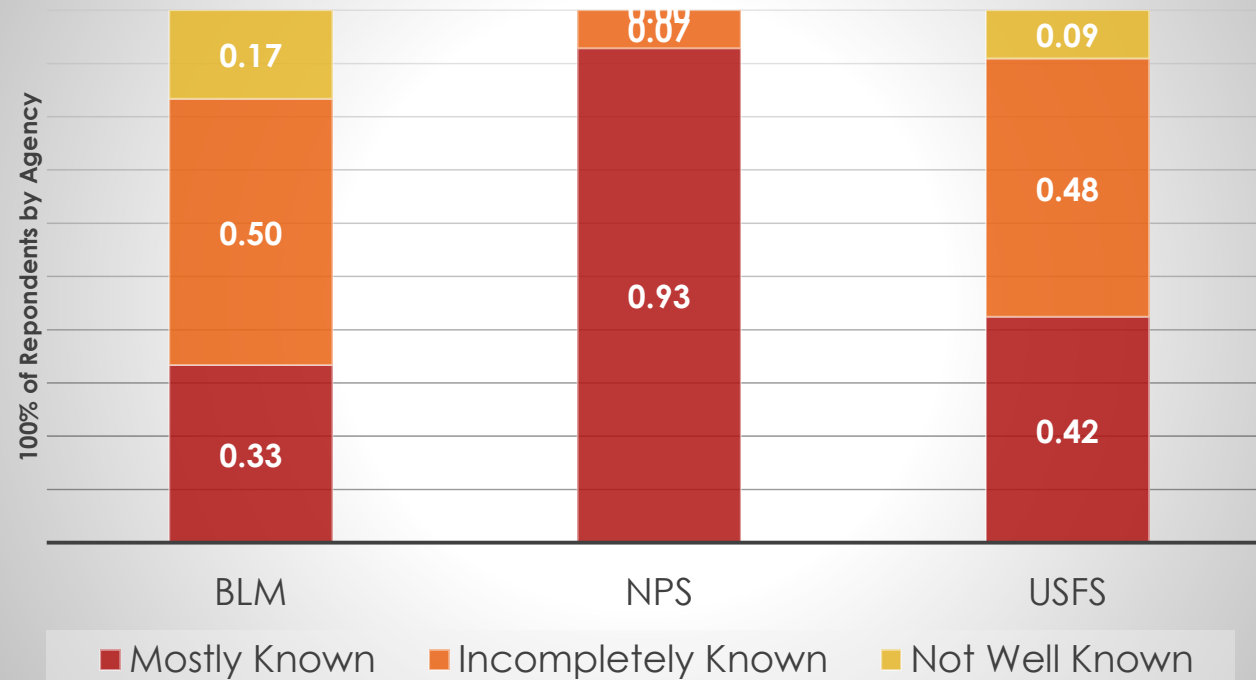
Health Data

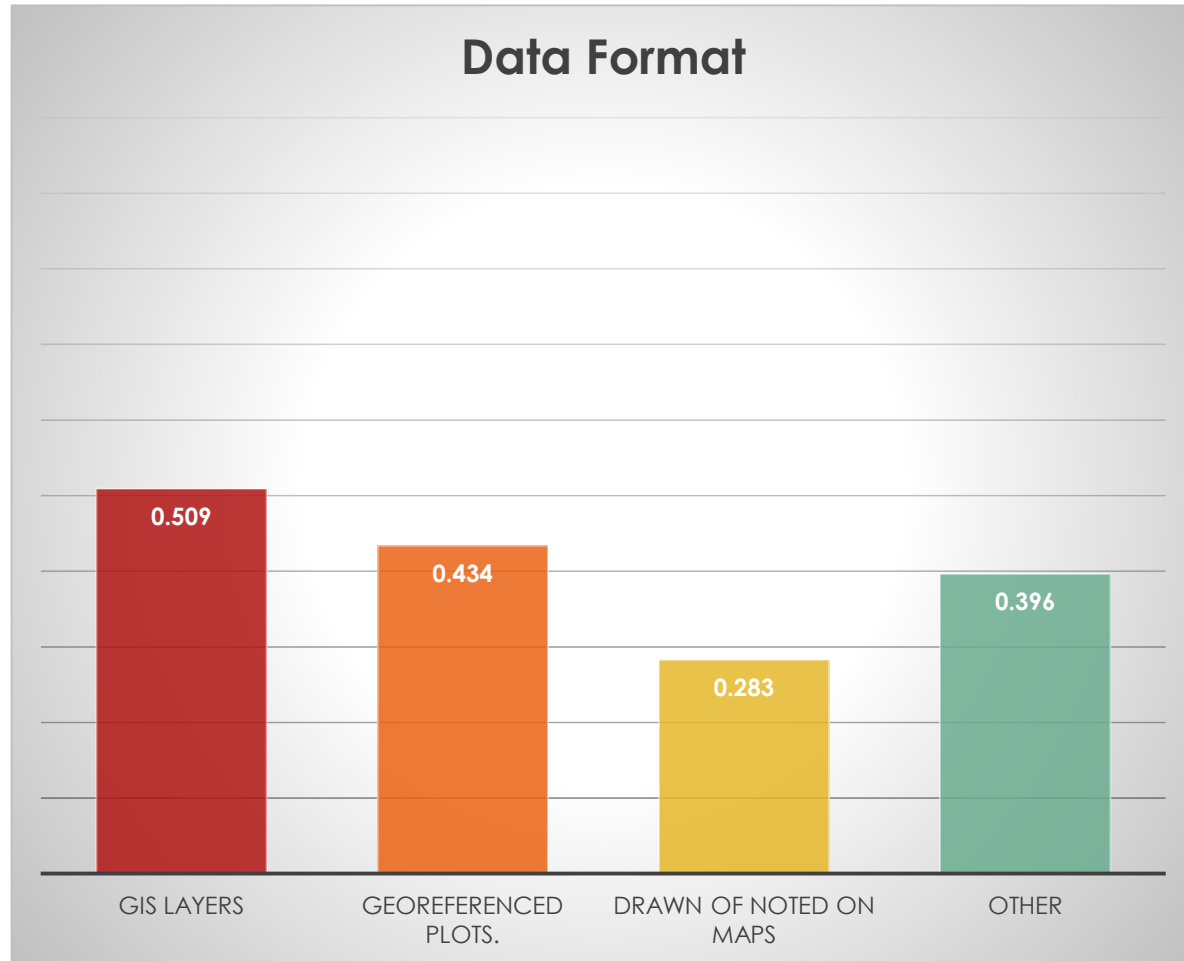
- ▶ 86% OF RESPONDENTS HAVE DATA ON WHITEBARK PINE HEALTH.
- ▶ 78% HAVE DATA ON BOTH WHITE PINE BLISTER RUST AND MOUNTAIN PINE BEETLE
- ▶ 34% OF RESPONDENTS DID NOT KNOW WHERE WHITEBARK PINE WAS HEALTHIEST OR MOST UNHEALTHY IN THEIR AREA OF OVERSIGHT

Health Data

- ▶ 54% OF HEALTH DATA IS DESCRIBED AS “MOSTLY KNOWN”
- ▶ ANOTHER 39% OF HEALTH DATA IS “INCOMPLETELY KNOWN”
- ▶ ONLY 7% OF HEALTH DATA IS “NOT WELL KNOWN”

How Complete is Health Data?

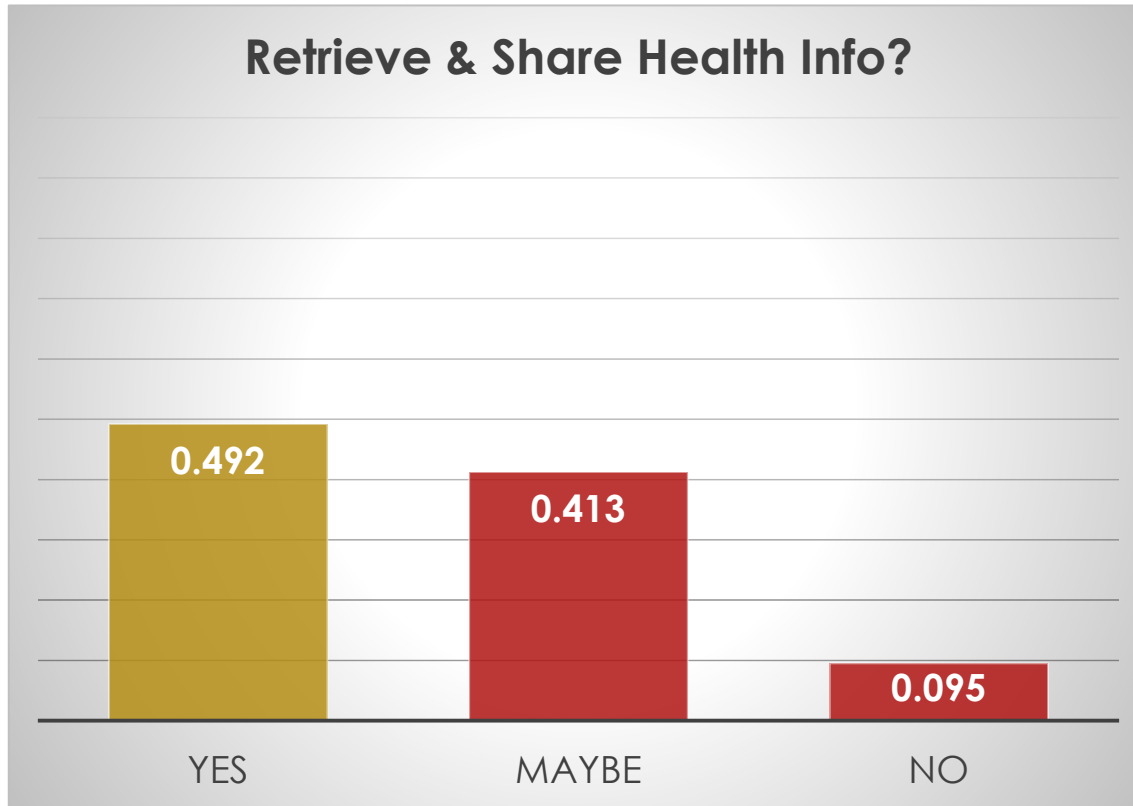




Health Data

- ▶ 86% OF RESPONDENTS HAVE DATA ON WHITEBARK PINE HEALTH.

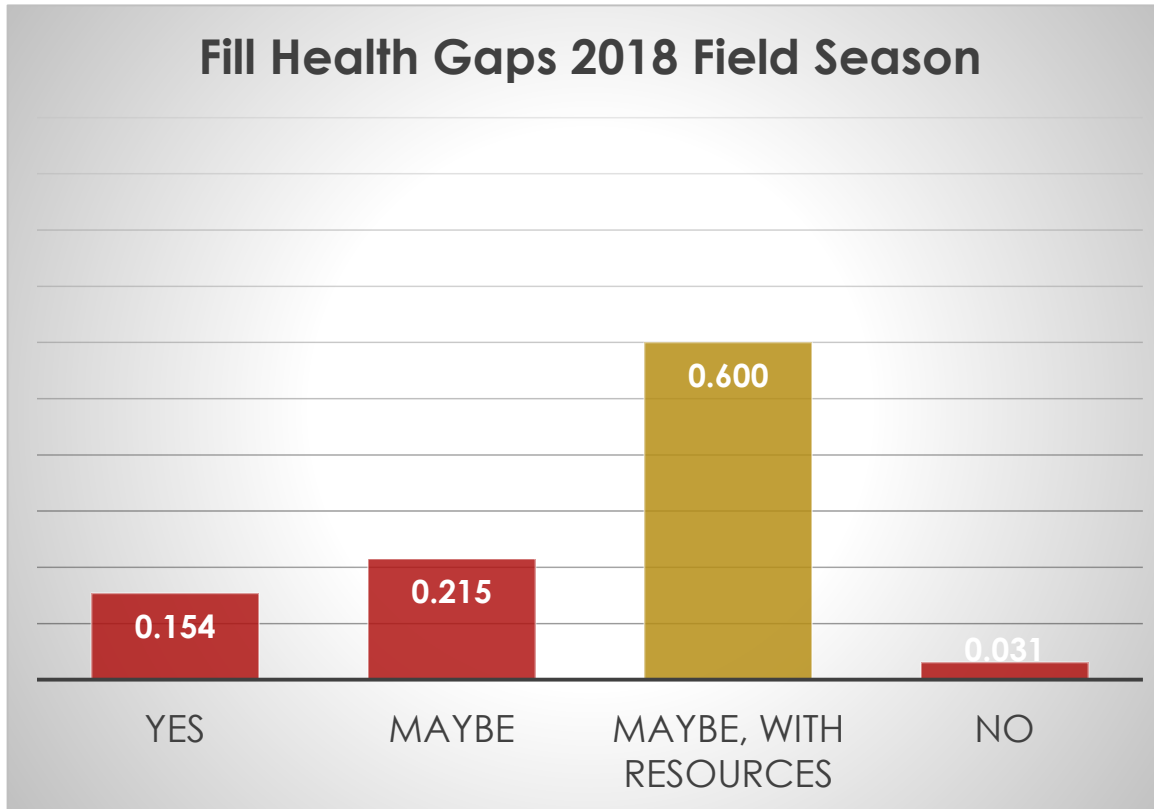
Retrieve & Share Health Info?



Health Data

- ▶ 86% OF RESPONDENTS HAVE DATA ON WHITEBARK PINE HEALTH.

Fill Health Gaps 2018 Field Season



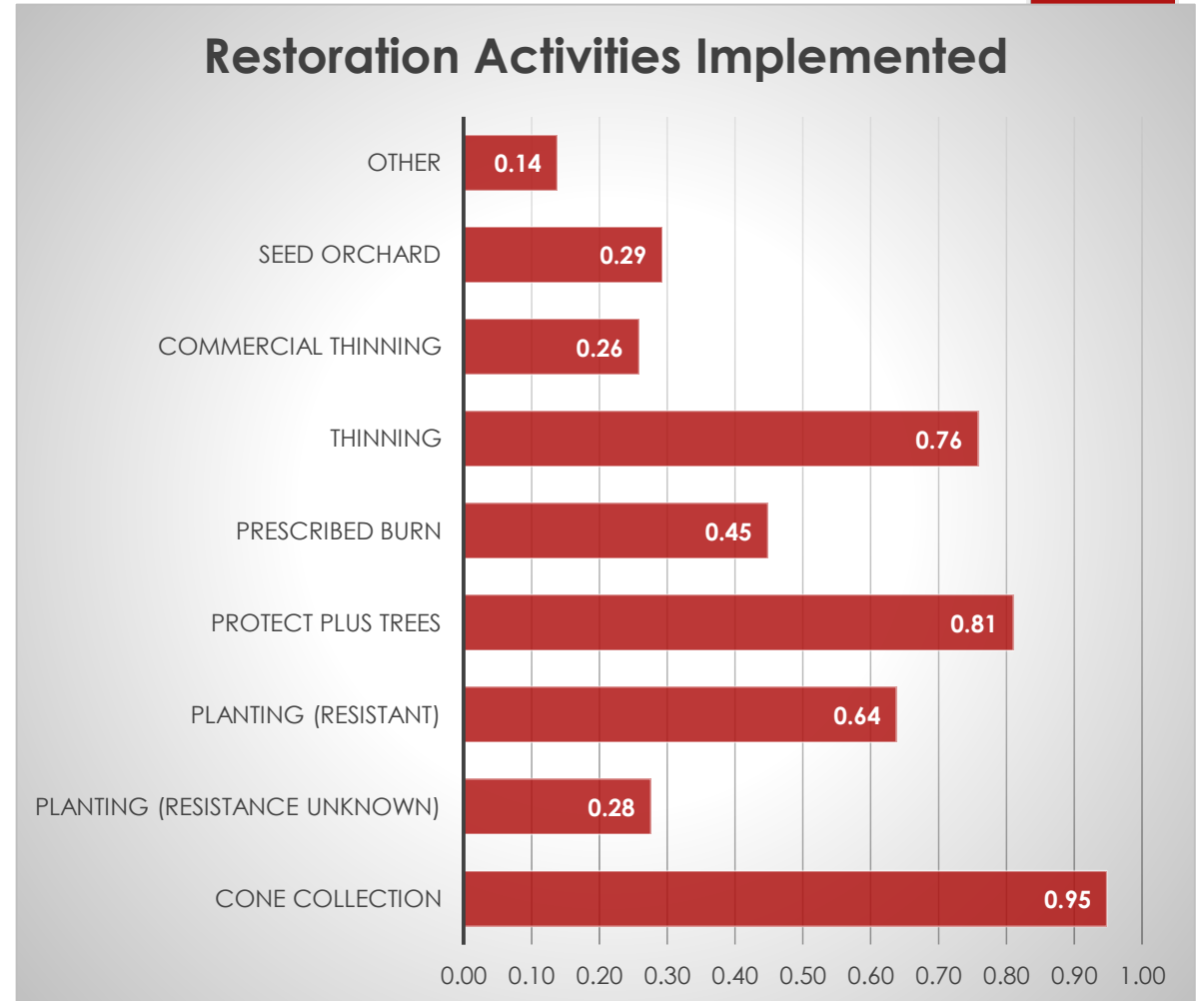
Health Data

- ▶ 86% OF RESPONDENTS HAVE DATA ON WHITEBARK PINE HEALTH.

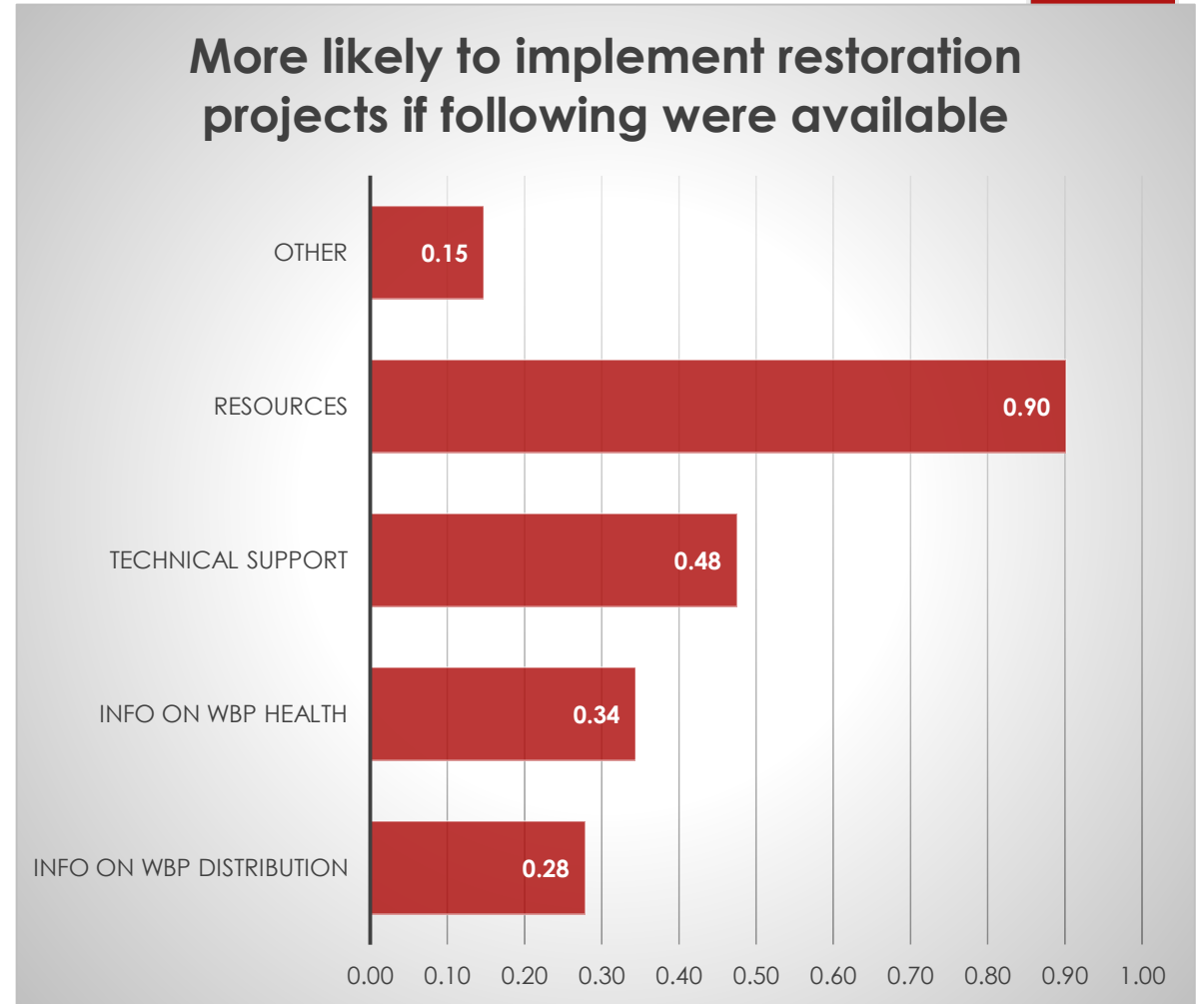
Restoration

- ▶ 88% of Respondents have implemented or considered whitebark pine restoration activities in their area of oversight
- ▶ 84% would be able to show on a map where they had implemented or considered implementing restoration activities
- ▶ Only 25% of respondents have included mitigation for climate change in restoration activities

Restoration



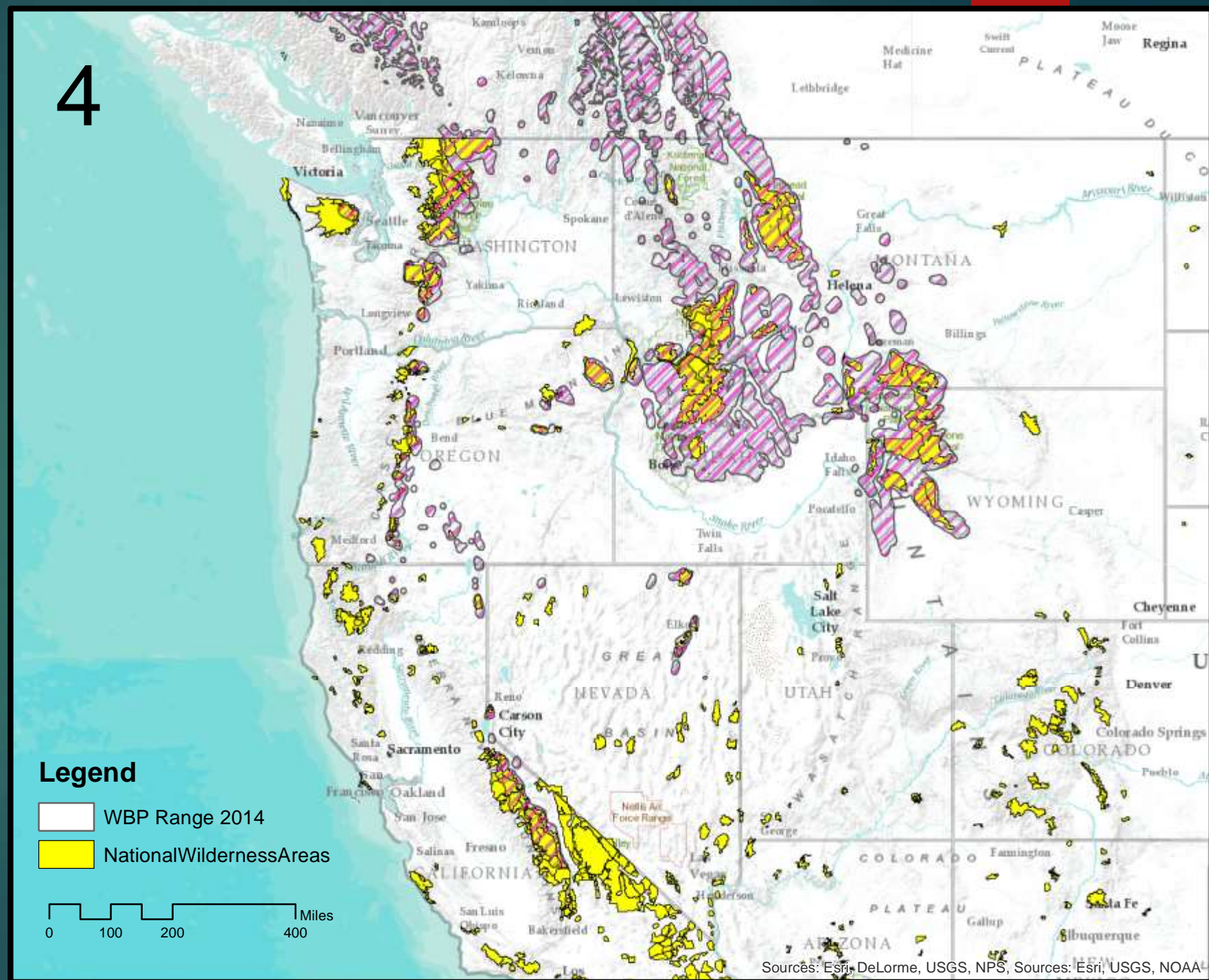
Restoration



Wilderness

4

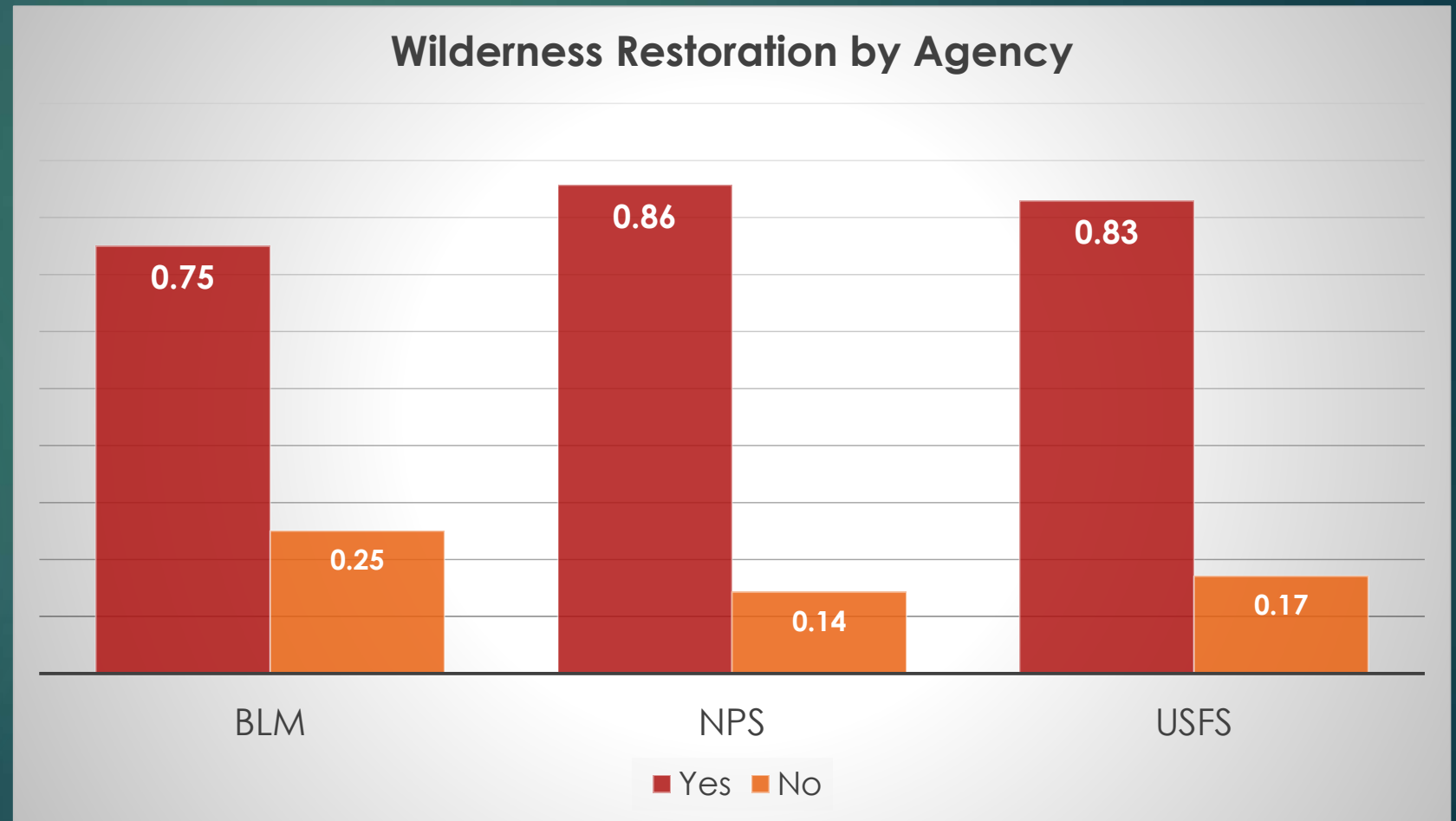
- 82% of respondents think we should restore unhealthy whitebark pine communities in wilderness areas



Wilderness

Do you think we should restore unhealthy whitebark pine communities in Wilderness Areas?

- 82% of respondents think we should restore unhealthy whitebark pine communities in wilderness areas



Conclusions

- ▶ 95% have data on whitebark pine habitat
- ▶ With Resources, 62% may be able to fill data gaps in distribution data during the 2018 Field Season (another 34% Yes or Maybe)
- ▶ 86% have some whitebark pine health data
- ▶ 60% think they could fill gaps in health data with resources during the 2018 field season (another 37% Yes or Maybe)
- ▶ 34% of Respondents DID NOT know where whitebark pine was healthiest/unhealthiest in their area of oversight
- ▶ 88% have implemented or considered restoration
- ▶ Only 25% have included mitigation for climate change
- ▶ 82% support restoration in wilderness

Acknowledgements

- ▶ US Forest Service Funding
- ▶ Diana Tomback
- ▶ Bob Keane
- ▶ Eric Sprague
- ▶ Glenda Scott
- ▶ David Gwaze
- ▶ All Survey Respondents

If you're interested in taking the survey, email me (julee.shamhart@whitebarkfound.org) for link to survey or visit WPEF web page at whitebarkfound.org/survey