



AMERICAN FORESTS

# Building a Movement



**50** states  
**43** countries  
**1,000** projects  
**55,000,000** trees

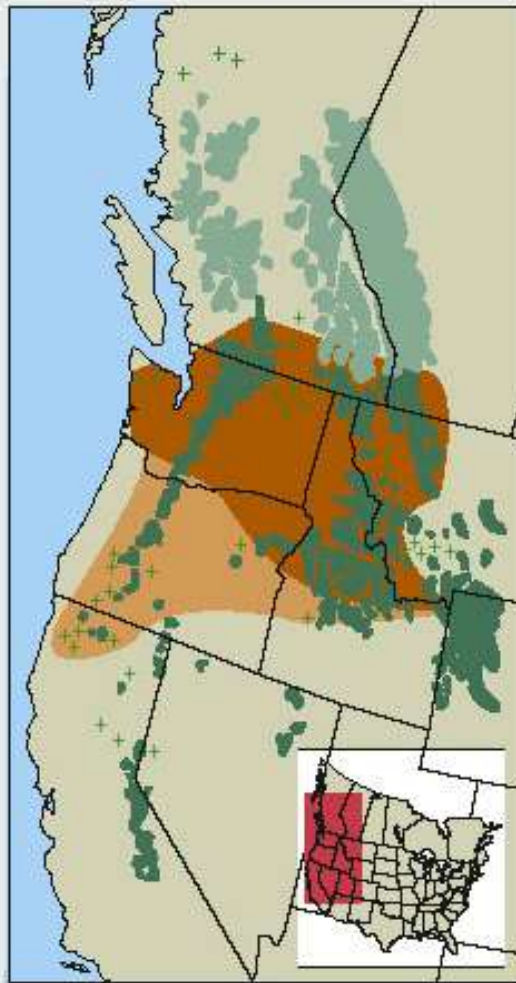
**ReLeaf by the Numbers.**



Whitebark pine  
■ Major subalpine component  
■ Minor component  
+ Isolated occurrence

Whitebark pine mortality  
■ 41% - 100% dead  
■ 21% - 40% dead  
■ 0% - 20% dead

Whitebark pine infected with  
blister rust  
■ 41% - 100% infected  
■ 20% - 40% infected  
Infection rate unknown for  
rest of range.

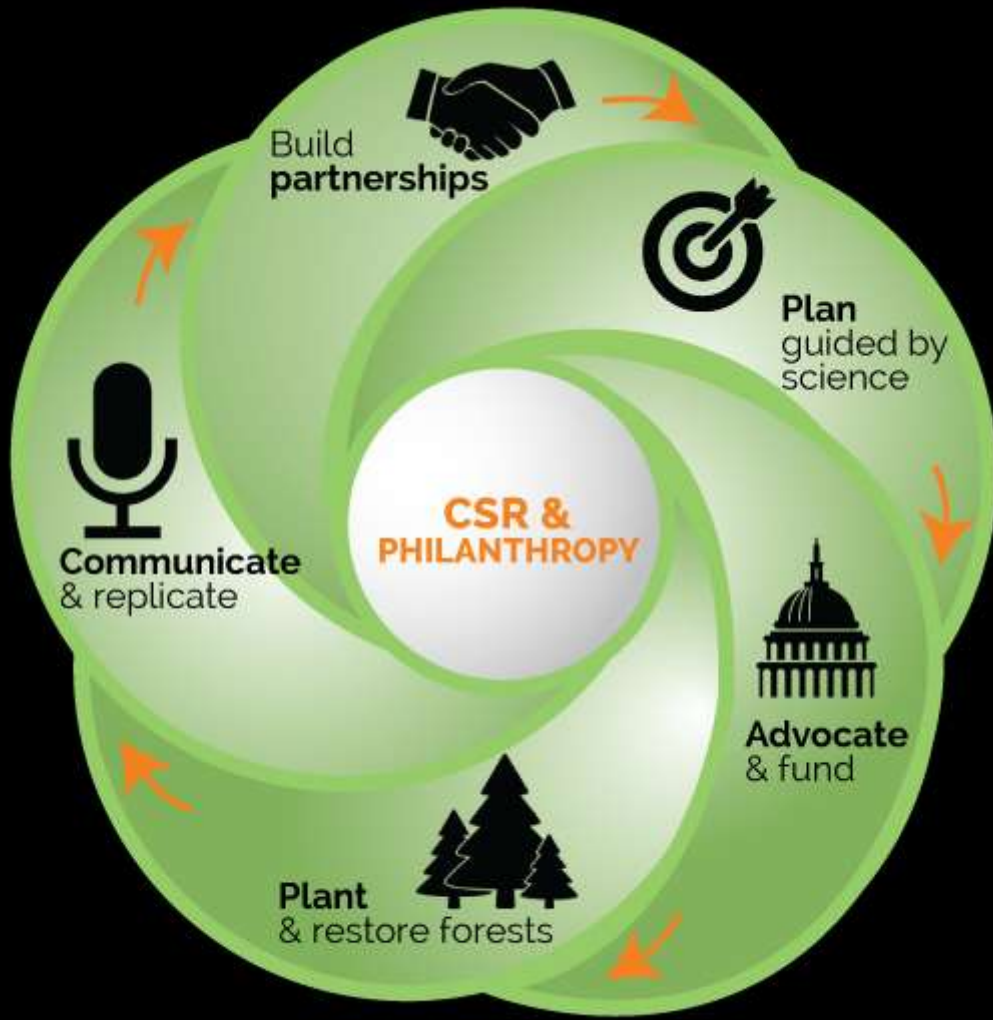


# Funding Trends: landscapes, outcomes, collaboration



# Corporate Funding Trends





# Establish a Coalition



**Thank you!**